

Canon

CANON
GENUINE
TONER, CARTRIDGE
& PARTS

GENUINELY

MAKE THE DIFFERENCE

Canon GENUINE Toner, Cartridge, & Parts

WHY USE GENUINE PRODUCTS?

As a leader in the imaging equipment industry, Canon designs its products to help you achieve your goals. While its devices may have changed over time, the one constant through it all is Canon quality.

Canon has invested much of its knowledge into developing toner, cartridges, and parts to help ensure productivity and efficiency when using your Canon devices.

This guide will help you understand the technology behind Canon GENUINE Supplies and how they help you achieve high performance from your Canon device.

Canon GENUINE supplies are designed by Canon engineers and manufactured in Canon facilities. Developed using precise specifications, these toners, cartridges, and parts are key ingredients for successful printing. Canon GENUINE supplies give you confidence that you'll have high quality throughout the entire printing process while delivering maximum efficiency and minimal downtime.

HOW TO RECOGNIZE THE GENUINE BRAND

The Canon Trustgram

The Canon trustgram can be found on the GENUINE Toner boxes to provide security, authentication, and protection against counterfeit products. It's the symbol that identifies a superior quality product.



The Canon and GENUINE Logos

Canon brands its parts and supplies because each product is developed to optimize the performance of Canon copiers and delivers the highest quality for the best results. The Canon name means GENUINE Toner, Cartridges, and Parts are the standard for outstanding reliability and superb output.

CANON RESEARCH AND DEVELOPMENT

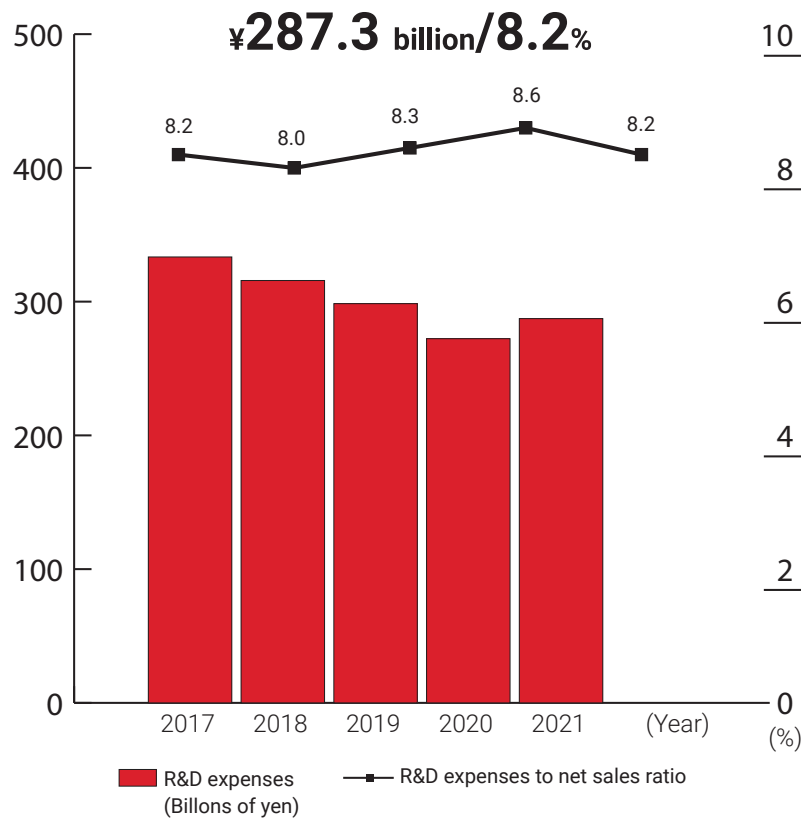
Canon's worldwide reputation as a technology leader is demonstrated by its continued presence among the top five companies awarded U.S. patents each year. As of November 30, 2021, Canon holds approximately 87,000 patents and utility models worldwide.

Canon has ranked in the top five for U.S. patent registrations for the past 37 years with numerous patents for toner, toner bottles, cartridges, drums, and parts.

Many of these patents help to improve toner insertion while others help ensure high-quality output and functionality. This is just an example of how Canon GENUINE Toner, Cartridges, and Parts can help improve the Canon customer's user experience.



R&D Expenses/R&D Expenses to Net Sales Ratio



“ In terms of reliability, Canon GENUINE parts and supplies are second to none. ”

SUPPLIES TECHNOLOGY

CARTRIDGE TECHNOLOGY

In 1982, Canon developed the world's first all-in-one cartridge for copy machines and continues to offer this technology today. Each cartridge contains:

- Photosensitive Drum
- Charging Unit
- Cleaning Unit
- Developing Unit
- Toner Hopper

This combination makes it easy and convenient for users to change multiple components and replace toner and parts all in one easy step!

Besides being user-friendly, these cartridges are environmentally conscious, thanks to the implementation of the Toner Cartridge Recycling Program. Canon incorporates environmental practices throughout the life cycle of all-in-one cartridges.

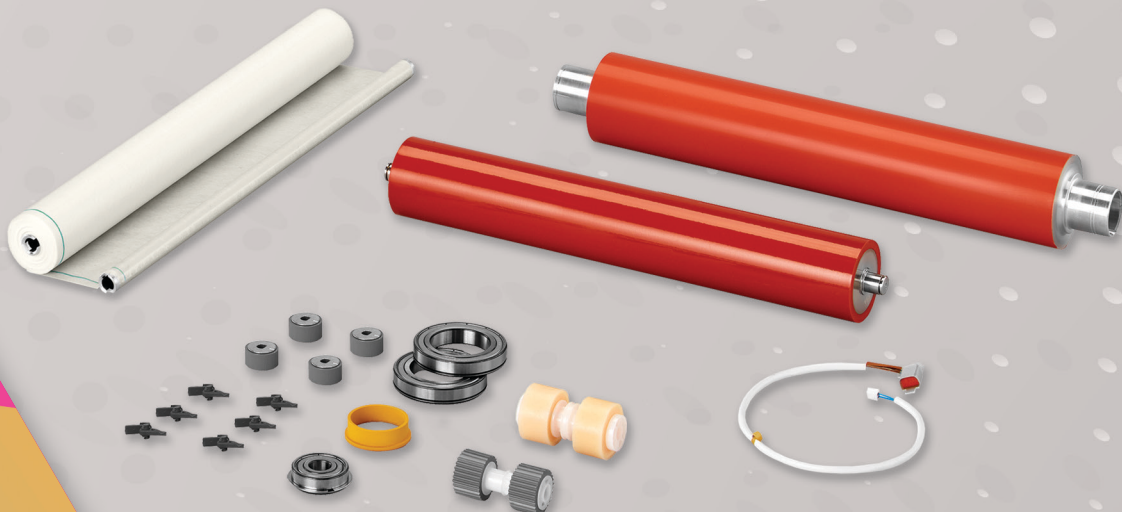
INSULATED AIR PRESSURE TONER BOTTLE TECHNOLOGY

Canon's Insulated Air Pressure (IAP) Toner Bottle is designed to help optimize efficiency. The IAP Toner Bottle uses an air-assistant system that enables a steady supply of toner during the printing process.

GENUINE PARTS

Canon GENUINE Parts are stringently tested using state-of-the-art equipment under many different conditions. Some of the integral parts of a Canon device include fixing and pressure rollers, cleaning blades, cleaning rollers, separation claws, and pick-up rollers. Canon also offers Quality Assurance (QA) kits that are carefully designed for preventative maintenance and help to avoid downtime and ensure quality throughout the life of your device.

Ask your dealer if they're using Canon GENUINE Parts when servicing your machine. Using Canon GENUINE Parts can help achieve high yields, reliable performance, and high-quality output while minimizing jams and malfunctions.



TONER TECHNOLOGY

With advanced research and development, Canon has created various toners to suit different markets. Using Canon GENUINE Toner for your application ensures that you're getting the best output possible!



“ By using GENUINE products, we know the machines are going to run the best and the customer is going to be happy. ”

1 Consistently Stable (CS) Toner

- Improved toner surface to provide stable and consistent color
- Energy-saving fusing performance
- Proper fixing at a high print speed

2 Consistently Vivid (CV) Toner

- Improved outer shell for consistent imaging quality
- Sharp, precise, and clear text and graphics
- Uses micro-dispersed pigment technology

3 Vivid (V) Toner

- Smooth and consistent application
- Color stability
- Wide color gamut

4 Spherical and Synergy (S) Toner

- Optimum gloss for business documents
- Polymerized toner for high quality

5 Pure Quality (pQ) Toner

- For light production and office environments
- Wax within the toner particle allows for oil-less fusing
- Improved fusing performance for energy savings

Consistently Vivid (CV) Toner

CV Toner is used in the production market for vivid, high-quality color prints.

Consistently Stable (CS) Toner

CS Toner allows for high-quality, production-level output within Canon mid-speed office color copiers.

Vivid (V) Toner

This pulverized color toner with a micro-dispersed structure of wax allows for oil-less fixing, gloss uniformity, and optimization in color digital presses.

Spherical and Synergy (S) Toner

S Toner's unique spherical shape and size technology help to create high-quality documents for Canon office color copiers.

Pure Quality (pQ) Toner

pQ toner achieves truly balanced color reproductions, consistent image quality, and high productivity.

CANON GENUINE TONER

Quick Fixing (QF) Toner

For use with Canon's mid-speed black-and-white and color business copiers, QF Toner produces high-quality output while reducing consumption.



High-Reliability (HR) Toner

Canon HR Toner was designed to provide excellent stability and consistency, specifically for high-speed, black-and-white copiers.



Exact Black (eB) Toner

High-end, black-and-white digital presses demand high quality and the reliability of eB Toner.



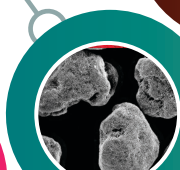
Precise Output (pO) Toner

pO Toner produces precise output while achieving energy savings due to enhanced fusing performance.



Defined and Quick Fixing (DQF) Toner

The binder resin for DQF Toner has been enhanced for highly improved fixing performance in black-and-white business copiers.



Energy-Saving Fine (EF) Toner

EF Toner is Canon's original, on-demand fusing toner for single-function printers.



- 6 Quick Fixing (QF) Toner**
- Enhanced melting characteristics
 - Energy-saving
 - Oil-less fixing

- 7 High-Reliability (HR) Toner**
- Binder resin technology for accurate developing performance
 - Achieves high-resolution images in high-speed printing
 - Maintains consistency throughout the print job

- 8 Exact Black (eB) Toner**
- Optimum pigment is well dispersed within each toner particle
 - Rich, exact black images and text
 - Resin improves fusing performance and productivity

- 9 Precise Output (pO) Toner**
- For high-end, black-and-white copiers
 - Precise text reproduction
 - Pigment technology provides high-quality halftone images
 - Improved fusing allows for energy savings in high-speed printing

- 10 Defined and Quick Fixing (DQF) Toner**
- Improves print speed
 - Energy-savings from fusing process at lower temperature

- 11 Energy-Saving Fine (EF) Toner**
- Low-temperature, quick melting, and firm fixing characteristics
 - Power-saving
 - Reduces wait time between standby and print modes

DRUM TECHNOLOGY

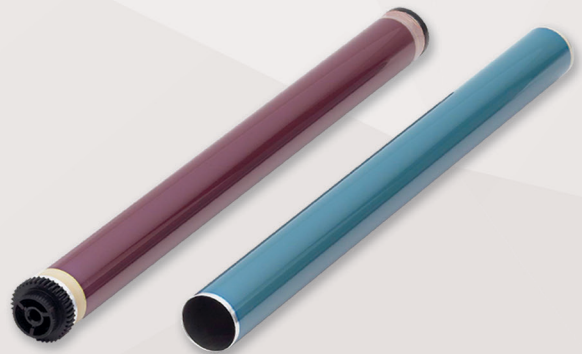
Drums are metal cylinders coated with a thin photoconductive film, and they're directly involved in many steps of the printing process. The surface of the drum becomes electrically charged and then, during exposure, laser beams "draw" the image onto the drum by discharging static electricity.

Toner affixes to the drum during the developing process, which is followed by the transfer of the toner from the drum to the paper. Canon GENUINE Drums are designed to enhance all the areas in which they're involved.

“ When you use Canon GENUINE products, it assures that the client has minimal downtime, and it maximizes uptime. ”

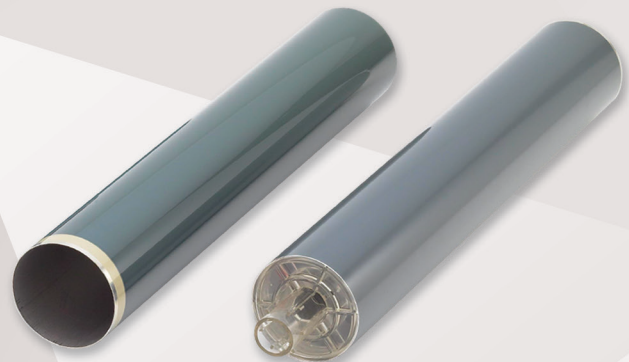
A-SI DRUM

Canon developed its amorphous silicon (a-Si) drum in 1984. It was designed for high-speed copiers by forming a uniform a-Si film over the surface of the drum. This film greatly increases the drum's hardness and durability.

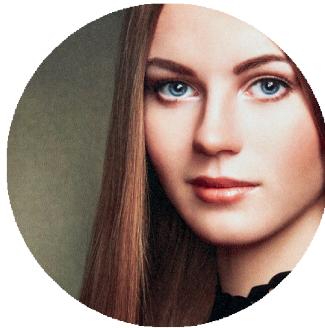


A-SI IMAGING ASSEMBLY

The a-Si Imaging Assembly was developed for high-speed Canon print production systems and environments. Combined with many different parts, this drum assembly decreases the time needed for cleaning and adjustments, providing customers with high quality, stability, durability, and reliability.

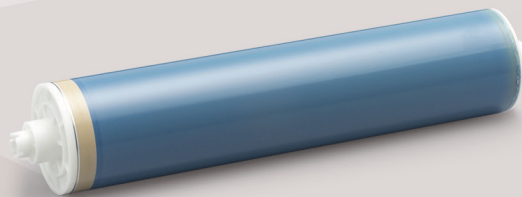


“ I would recommend using Canon GENUINE Parts and Supplies to any dealer that’s trying to be successful in customer service. ”



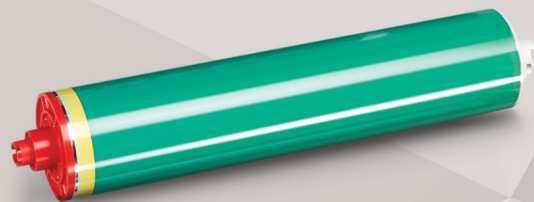
OPC DRUM

The Canon GENUINE Organic PhotoConductor (OPC) drum is designed to have exceptional charging characteristics, light responsiveness, charge storage, wear resistance, and durability to meet the needs of the mid- to low-speed copier market.



E-DRUM

The Canon Excellent Drum (E-Drum) is designed specifically for Canon print systems. Its additional overcoat layer aids in improving stability and productivity, and it helps to achieve a longer drum life and greater efficiency in both the production and office markets.



ENVIRONMENTAL INITIATIVES



CANON GENUINE SUPPLIES AND THE ENVIRONMENT

In the spirit of its corporate philosophy of *Kyosei*—all people, regardless of race, religion, or culture, harmoniously living and working together into the future—Canon's commitment and contributions to the environment and world community are integral parts of its structure. This dedication has inspired a variety of programs at both the global and regional levels.

TONER CARTRIDGE RECYCLING PROGRAM

In 1990, Canon became the first company to launch a recycling program for its cartridges. With the cooperation of its customers, Canon has collected more than 444,000 tons around the world. Canon's all-in-one cartridges are a combination of photosensitive drum, charging unit, cleaner, and developing unit that can be reused. These toner cartridges are collected and sorted, and parts are then reused or recycled. They might also be put through the energy recovery process, which produces plastics, metals, and reconditioned parts for later use in the manufacturing of new cartridges and other products.

OVER 444,000 TONS



TONER CONTAINERS COLLECTION PROGRAM

Unlike Canon's all-in-one toner cartridges, containers for toner and waste toner are made mainly of plastic materials, and each includes a resin code to make it easier for consumers to recycle locally. Canon toner particles and plastic toner containers are safe for local recycling and energy recovery facilities. However, if local options are not available to its customers, Canon also offers a toner container collection program.

RAPID FUSING SYSTEM

Canon developed its RAPID Fusing System to improve energy consumption. This technology uses a ceramic heater—that heats quickly—and a fixing film that transfers heat effectively. The result is reduced electricity use and increased power savings.



GENUINE RESULTS

Remember, each Canon toner, cartridge, and part is designed and formulated for a specific Canon device, so make sure to look for the Canon and Canon GENUINE logos *and* the trustgram on all packaging. If you see these, then you know the product you're about to use has been optimized

to help ensure quality throughout the entire printing process. If you're unsure about a product's authenticity, please contact your Authorized Canon Dealer and request that only Canon GENUINE Parts and Supplies be used with your device!

“ *We've built a trusting relationship with our customers because of Canon GENUINE Parts and Supplies.* ”



Canon

usa.canon.com



Canon and the GENUINE logo are registered trademarks of Canon Inc. in the United States and may also be registered trademarks or trademarks in other countries. All other referenced product names and marks are trademarks of their respective owners. Specifications and availability subject to change without notice. Not responsible for typographical errors.
©2023 Canon U.S.A., Inc. All rights reserved.